



Istituto Ricerca Internazionale
per lo Sviluppo
Associazione di Promozione Sociale



Erasmus+

IRIS

International Institute Research and Development

Thank you for choosing us...



Istituto Ricerca Internazionale
per lo Sviluppo
Associazione di Promozione Sociale



Erasmus+

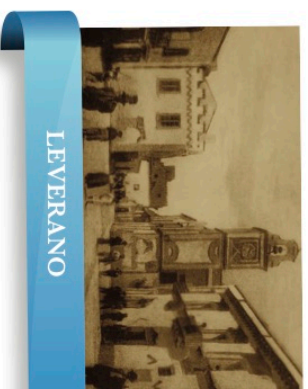
ABOUT IRIS

IRIS professionals work since 1997 on the European Funds with the management of different projects. The principal objective, of the association, is that of to develop the territory and to enrich the culture of the people, through dissemination of professional knowledge and cultural approaching so the citizens of the world through mobility. The association offers a variety of activities and services for children, youth and elders of our territory, and for the people.



IRIS – APS - International Institute Research and Development - is a non-profit association, founded in 2006, and it is situated in Leverano, province of Lecce (south Italy), in Via Giuseppe Verdi n. 10.

IRIS works at European, International and local level.



Leverano is a town and commune in the province of Lecce in the southeastern part of the Apulia region of south-east Italy. It is bounded by the comuni of Arnesano, Carmiano, Copertino, Nardò and Veglie.

Leverano was severely destroyed by the Ostrogoth Totila, it was also destroyed by the Arabs in the 9th century. A tower was later built in 1220 and it protected against pirate raids. The tower is built with Norman architecture.

The area around Leverano produces both red, white and rose Italian DOC wine, though the region produces vastly more red wine than anything else. The grapes are limited to a harvest yield of 15 tonnes/ha. Red wines must have a finished alcohol level of at least 12% and are composed of at least 65% Negroamaro and up to 35% of the assorted blend of Malvasia, Sangiovese and Montepulciano. White wines must have a minimum alcohol level of at least 11% and be composed by at least 65% Malvasia bianca with Trebbiano and Bombino bianco allowed to make up the remaining 35%.



Istituto Ricerca Internazionale
per lo Sviluppo
Associazione di Promozione Sociale

INFORMATIONS

ABOUT OUR COURSES

Training days are supplemented by visits to schools and discussions with other teachers in order to obtain the exchange of Now How and return home with an enrichment of their knowledge.

One day is dedicated to cultural activities to get to know our land with its sea and its southern flavors.

*IRIS for help to ensure that participants
have a successful training experience*



Erasmus+

OUR SERVICES

(for courses and job shadowing)

IRIS for help to ensure that participants have a successful training experience abroad and have a positive experience, both in the host country and in their country of origin, therefore it can offer the following services on the basis of the project:

1. Transfer from / to the airport of Brindisi; (free over 5 participants)
2. Italian language Course;
3. Italian Cultural Activities;
4. Accommodation in comfortable apartment;
5. Kit of Italian permanence;
6. Placement Work;
7. Support for placement;
8. Tutoring, Supervisory and monitoring;
9. Free Wi-Fi;
10. Certification;
11. Final reports.





Istituto Ricerca Internazionale
per lo Sviluppo
Associazione di Promozione Sociale



Erasmus+

Effective Leadership
Training

Game Therapy

STEM



Drug Addiction

Handling Migration

Dispersion
and School abandoning:
educational prevention
strategies and actions.

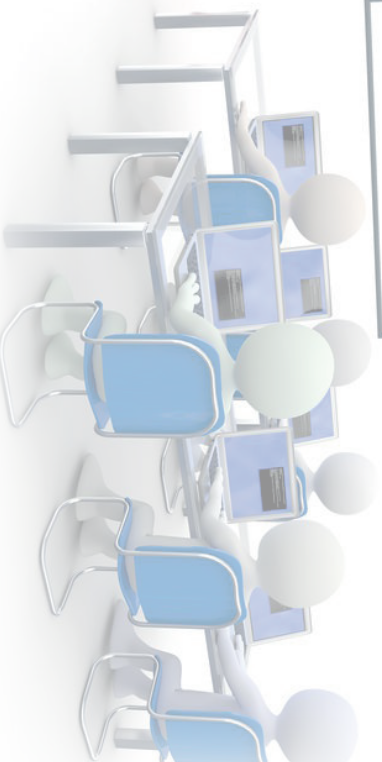
Social Integration.
Encourage School Inserting
and Integration Social.



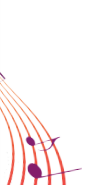
OUR COURSES

PIC: 948628379

ID: E10041830



Music and Dance Therapy



Education in Italy



Drama and
Motion Treatment

Maria Montessori's
Method.

ICT
Technology in Classroom

Prevention of violence
and child abuse



Usage of the Information
Technologies
actively in education



Istituto Ricerca Internazionale
per lo Sviluppo
Associazione di Promozione Sociale



Erasmus+

HOW TO GET TO LECCE CITY FROM THE BRINDISI AIRPORT

If you arrive in Salento by plane the airport of reference is the Brindisi airport that is called Aeroporto del Salento. It is the airport of reference for southern Puglia and ideal if you want to visit the cities in Salento and in the Valle d'Itria where the Trulli are. While if you want to visit the northern central part of Puglia then it's better to land at the Bari airport. Right, once you have arrived at the Brindisi airport how do I get to Lecce?

SHUTTLEBUS

From the square in front of the Brindisi airport there is a shuttle bus to Lecce that ends its run at the Airport City Terminal. This is located just at the entrance to the city of Lecce coming from Brindisi, near the Hotel Tiziano.

Inside the Airport City Terminal you can:

- make all check-in operations if you are travelling with hand luggage only
- ask for tourist information about Lecce and Salento
- park your car or camper

Travel time is about 40/45 minutes. At the Lecce Airport City Terminal you can also take buses that connect Lecce to the other most important destinations in Salento. From here you can also take a city bus for the Lecce train station.

TRAIN

You can also get to Lecce by train. In this case you must first take a bus from the Brindisi airport to the Brindisi train station, then from here take one of the first trains to Lecce. The shuttle bus service from the airport to the Brindisi station is supplied by STP Brindisi. Generally there are connections according to the arrival time of planes. Travel time is about 40 minutes and the frequency of the service is every 30 minutes.

AIRSHUTTLE

It is a transfer service from the airport to the main destinations in Salento. It is a car rental service with chauffeurs specialised in the direct transport of passengers between the Brindisi airport and the hotels or private homes in Lecce and Salento.



Istituto Ricerca Internazionale
per lo Sviluppo
Associazione di Promozione Sociale

Banking details

Name and Address of the Account Holder:

IRIS – ISTITUTO RICERCA INTERNAZIONALE PER
LO SVILUPPO

Name of Bank:

BANCA DI CREDITO COOPERATIVO – LEVERANO -

BCC -LEVERANO

Address of Bank:

PIAZZA ROMA 1

Bank Code:

8603 - 79700

Swift Code:

ICRAITRRGR0

Account Number:

300375

IBAN (International Bank Account Number)

IT 84 Z – 08603 – 79700 - 000000300375



Erasmus+

PAYMENT

560,00 € per person (5 days only course)

For 2020 IRIS offers or dinner or lunch*
in a restaurant in Lecce city
where we have agreement

*It is not possible to separate and discount
the value of included and unused meals.

For further informations please contact:

Dr.ssa Anna Lisa Trono

Via Giuseppe Verdi, 10 - 73045 – Leverano (LE) - Italy

skype: annalisatr - Tel/fax: +39.0832.911187

GSM: +39.393.3675387

Mail: annalisatrono@gmail.com

Website: www.associazioneciris.it

